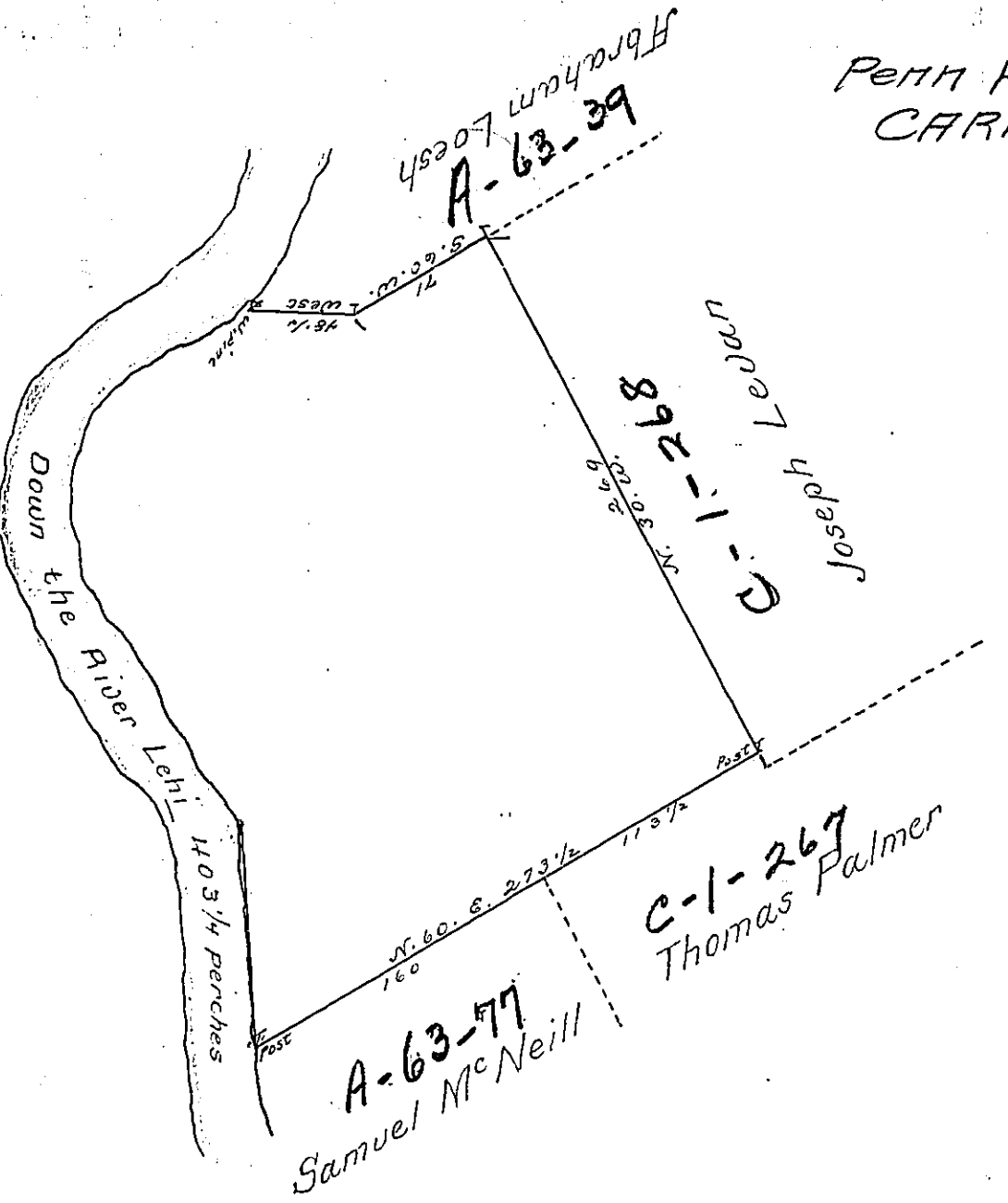


The bearing & distance down Lehi are

- 1. S. 60. W. 80
 - 2. S. 25. W. 40
 - 3. S. 2. E. 27 1/2
 - 4. S. 26. E. 42
 - 5. S. 35. E. 114
 - 6. S. 5. E. 100
- 403 1/4



By Virtue of a Warrant dated the 5th. Dec-
 ember 1785 Surveyed the 24 December 1794 to John
 Palmer the above described tract of Land situate a
 little above the mouth of Bear creek on the East side
 of Lehi in the County of Northampton containing
 four hundred acres an half & the allowance of six
 plant &c.

J. Geo. Palmer L.S.

To Richard T. Leech Esqr. S.G.

IN TESTIMONY that the above is a copy of the original remaining on file in
 the Department of Internal Affairs of Pennsylvania, made
 conformably to an Act of Assembly approved the 16th day of
 February, 1833, I have hereunto set my Hand and caused
 the Seal of said Department to be affixed at Harrisburg,

this third day of July 1900

James W. Latta
 Secretary of Internal Affairs.